

### TORRES STRAIT

## CAPE YORK PENINSULA KEY TIMBER SPECIES

Prepared by the CYPLUS Secretariat  
at the request of CYRAG.  
EDITION 2  
Prepared through the facilities of the  
Department of Natural Resources  
Cairns, Queensland  
February, 1997



COPYRIGHT © The State of Queensland and  
Commonwealth of Australia, 1997

PROJECTION: Albers Equal Area Projection  
Central Meridian: 142° East  
Standard Parallels: 8° and 18° South

**LEGEND**

Areas dominated by taller Darwin stringybark and sometimes with Melville Island bloodwood, Hyland's bloodwood, Clarkson's bloodwood and Cooktown ironwood. (14% of CYPLUS area)	Major Road
	Minor Road, Track
	CYPLUS Boundary
	River, Creek
	Homestead

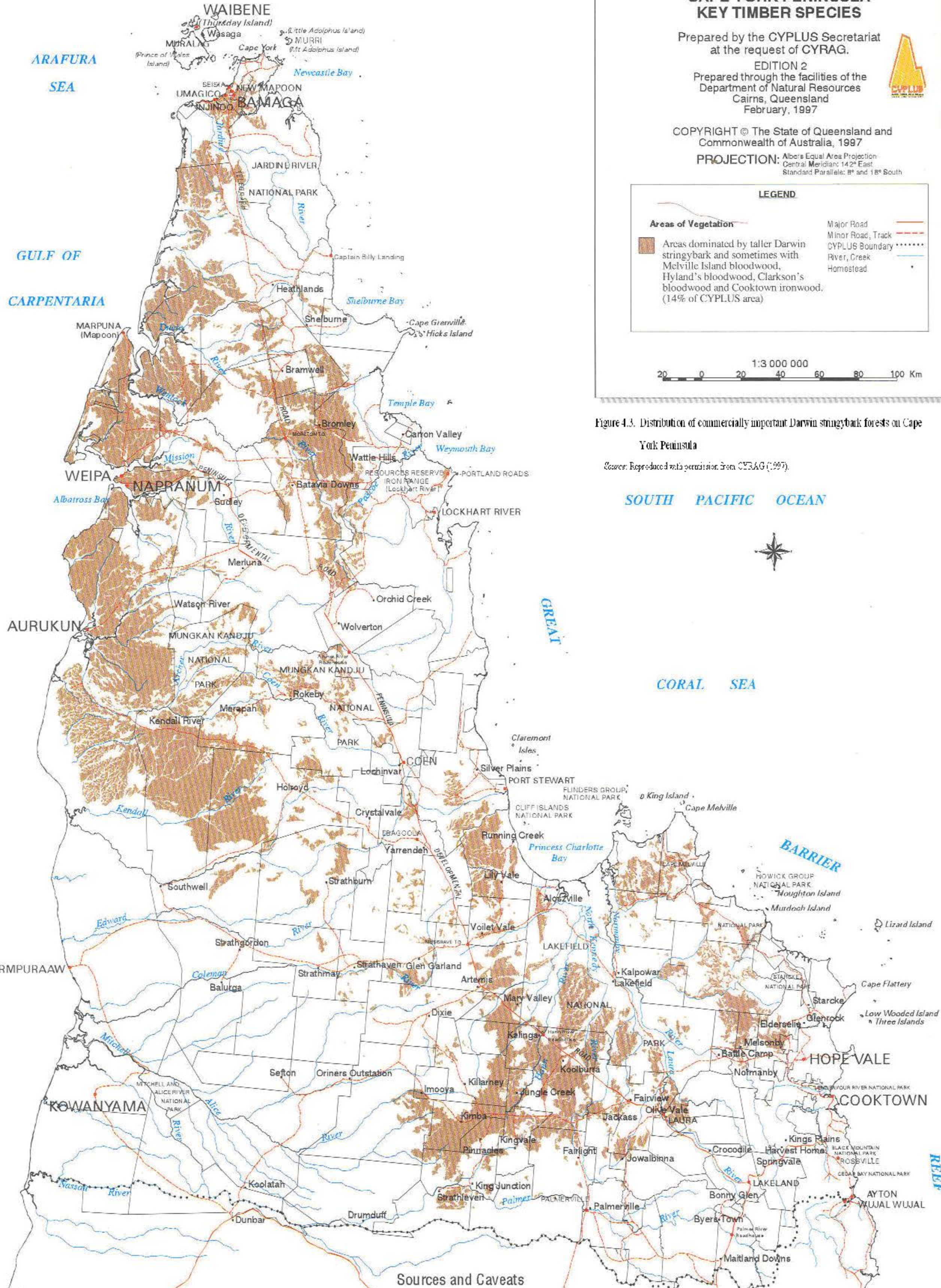
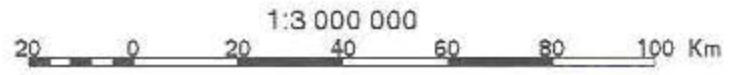


Figure 4.3. Distribution of commercially important Darwin stringybark forests on Cape York Peninsula

Sources: Reproduced with permission from CYRAG (1997).

### SOUTH PACIFIC OCEAN



### CORAL SEA